

Summary of CEMARS® certification:

Electrical and Pump Services Limited (trading as the EPS Group)



Electrical and Pump Services Limited (trading as the EPS Group) meets the requirements of CEMARS® certification having measured its greenhouse gas emissions in accordance with ISO 14064-1:2006 and committed to managing and reducing its emissions in respect of the operational activities of its organisation.

Introduction¹

EPS Group is a privately owned Irish Company with its head office located in Mallow, Co. Cork and has branches in Ballyhaunis Co. Mayo, Mountrath Co. Laois, Naas Co Kildare, Newtownards Co. Down and Alton in Hampshire, UK. The Group employs over 456 people including its own design team of process, mechanical and electrical engineers. Head office has a 2000m² workshop with full manufacturing facilities to build water/wastewater treatment plant and equipment, 2000m² of design support offices, installation, commissioning and operations crews. EPS have recently opened a 3500m² purpose built new manufacturing facility which will develop the principals of Off-site Design, ensuring more efficient production, installation and operations of water treatment plants and individual components of the process such as bespoke dosing kiosks.

The Group consists of Electrical and Pump Services Ltd, AH Cullen, EPS Water (UK), and DPS (NI). of these units of the group AH Cullen and Dynamic Automation have now ceased operations.

The Contracts Division carries out Design, Build and Operate of Water and Wastewater Pumping & Treatment Systems. The Operations & Maintenance Division provides long term operational contracts to Local Authorities and Industrial end users.

EPS is committed to operating in an energy-efficient environment and considers the management of its CO₂ emissions to be a principal component of its environmental and sustainability objectives. It is our aim to exploit all opportunities for energy savings throughout the business, in order to establish ourselves as an environmentally responsible organisation as well as a contributor to national carbon reduction targets.

Boundary

The percentage figures indicate the level of ownership by the entity undergoing verification. EPS Group consists of EPS Limited incorporating EPS Water and DPS.

¹**Disclaimer:** This Disclosure Statement is a summary of the verified information considered for certification and the certification decision. It should not be taken to represent the full submission for certification. Whilst every effort has been made to ensure that the information in this Disclosure Statement is accurate and complete, Enviro-Mark Solutions Limited does not, to the maximum extent permitted by law, give any warranty or guarantee relating to the accuracy or reliability of the information.

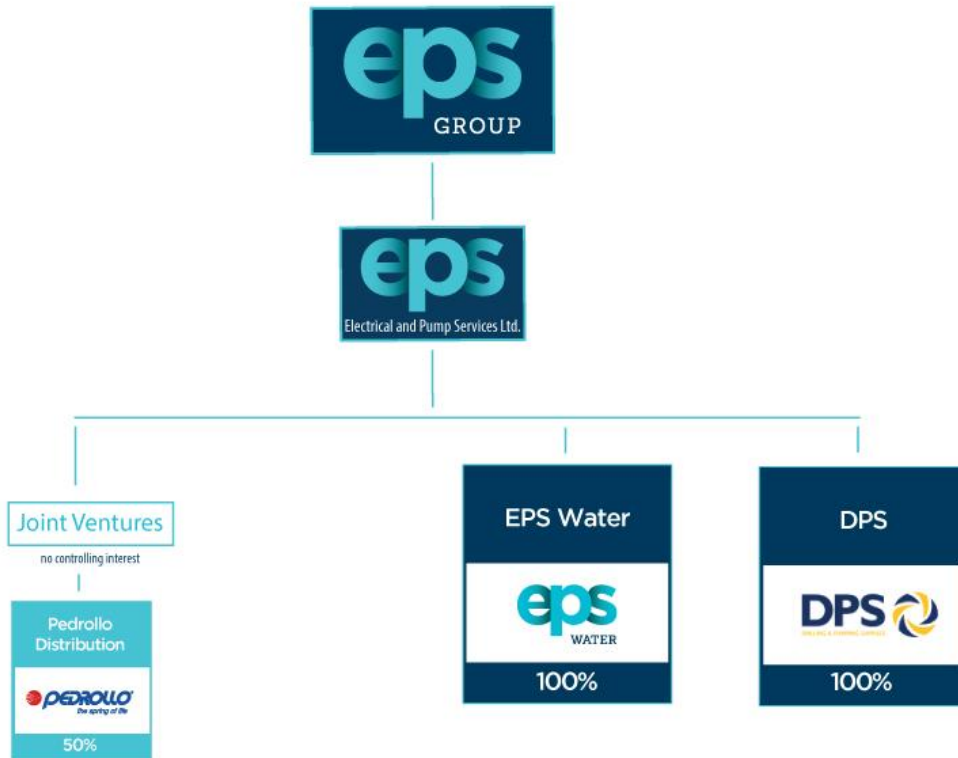


Figure 1: Organisational structure showing business units included and excluded

Consolidation approach

An operational control consolidation approach was used to account for emissions.

Base year – 01/04/2010 to 31/03/2011 (re-baselined with DPS)

Measurement period – 01/04/2017 to 31/03/2018

Emissions source inclusions – The operational GHG emissions for the organisation by emissions source are shown in Figure 2 below.

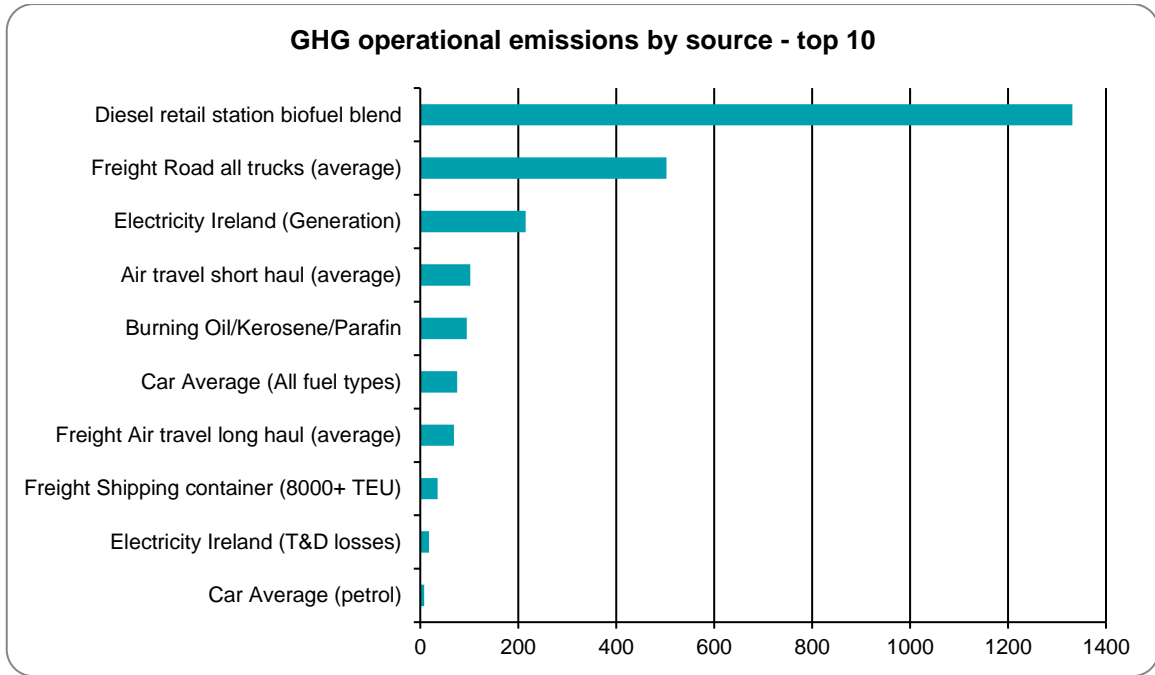


Figure 2: GHG emissions by emissions source

Emissions as tonnes of carbon dioxide equivalents (tCO₂e) for this period were:

Scope	tCO ₂ e
Scope 1	1,440.42
Scope 2	222.09
Scope 3 Mandatory	816.85
Scope 3 Additional	0.00
Scope 3 One time	0.00
Total gross emissions	2,479.35

Emissions intensity – 29.17 tCO₂e per £M gross turnover.

Emissions source exclusions – The following emissions sources were excluded from the inventory for this measurement period:

GHG emissions source	GHG emissions level scope	Reason for exclusion
Air Travel (Long Haul)	3	Accounts for less than 1% of Total GHG emissions
Waste	3	Accounts for less than 1% of Total GHG emissions
Water supply	3	Accounts for less than 1% of Total GHG emissions
Rail Travel (UK)	3	Accounts for less than 1% of Total GHG emissions
Ferry Travel	3	Accounts for less than 1% of Total GHG emissions

Emissions reduction commitments – A GHG emissions management plan and reduction targets have been developed.

The EPS Group has to date committed to reducing its GHG emissions intensity annually by a minimum of 2.5% to achieve a further minimum 12.5 % reduction by the end of the tenth year of the Programme. These percentage reductions equate to:

- 2.5% Reduction per year = 0.98 tCO₂e per €m Turnover
- 12.5% Reduction over 5 year period =4.92 tCO₂e per €m Turnover

This is in line with short term targets set out in the Climate Change Response Bill 2010. European and International law, protocols and programmes were also researched when determining reduction targets.

Emissions reduction initiative	Baseline (tCO ₂ e)	Target date
Implement policies, objectives, programmes and principals of the 50001 and 14001 ISO certification standards	39.37	30/03/2018

Emissions reductions summary against last year's plan

There has been a reduction of 13.66% in emissions intensity, compared to the base year.

Verified by – Achilles Assessment Services

Data quality score – High

Threshold of materiality – Excluded emissions do not exceed 5% of the total footprint for organisation stated.

Level of assurance – Reasonable

Certification status – CEMARS certified organisation

Certificate number – 2018098J

Valid until – 30 October 2019

Mallow Business & Technology Park, Quarters town, Mallow, Co.Cork, Ireland
Benny McDonagh, Tel: +353 (0)22 31285 Mob: 085 8000 214 Email: bmcDonagh@epswater.com